



**underwood®**

**SINCE 1945**



INTERNATIONAL NEW YORK TIMES  
Greek crisis takes shine off the euro for aspirants  
Obama vows to defend Iran deal





ITALIAN FAMILY COMPANY: FROM THE GRANDFATHER TO THE FATHER TO THE SON...  
A LONG STORY ESTABLISHED SINCE 1945

In the beginning the company specialised in handcrafted leather goods, producing leather desk accessories, jewellery boxes and a variety of gift items in leather all in the traditional style of Firenze. He continued to develop an extensive range of luxury leather goods and launched the “Underwood” brand.

In the early 90’s the decision was taken to re-design the Underwood line and to extend the collection to include not only high quality leather goods but launching also the unique and innovative “Underwood Modular Winding System”, a modular system of watch winders specifically designed with the needs of the watch collector in mind, to safely store and maintain automatic watches.

From it’s head office in Firenze the company continues to develop and produce exclusive new products and the extensive Underwood collection now includes a complete and unique line of accessories for men and women.

The company is proud of its long tradition in high quality products for both its own label.

The company will continue to pursue this strategy by expanding its current distribution network, by increasing it’s participation in key areas such as marketing, public relations and also by exhibiting at leading international trade shows.

All articles in collection are manufactured in our factory, completely hand-made by artisan production, with a specific attention to the quality of all components: the genuine Italian leather, the raw materials and all metal brass applications.































































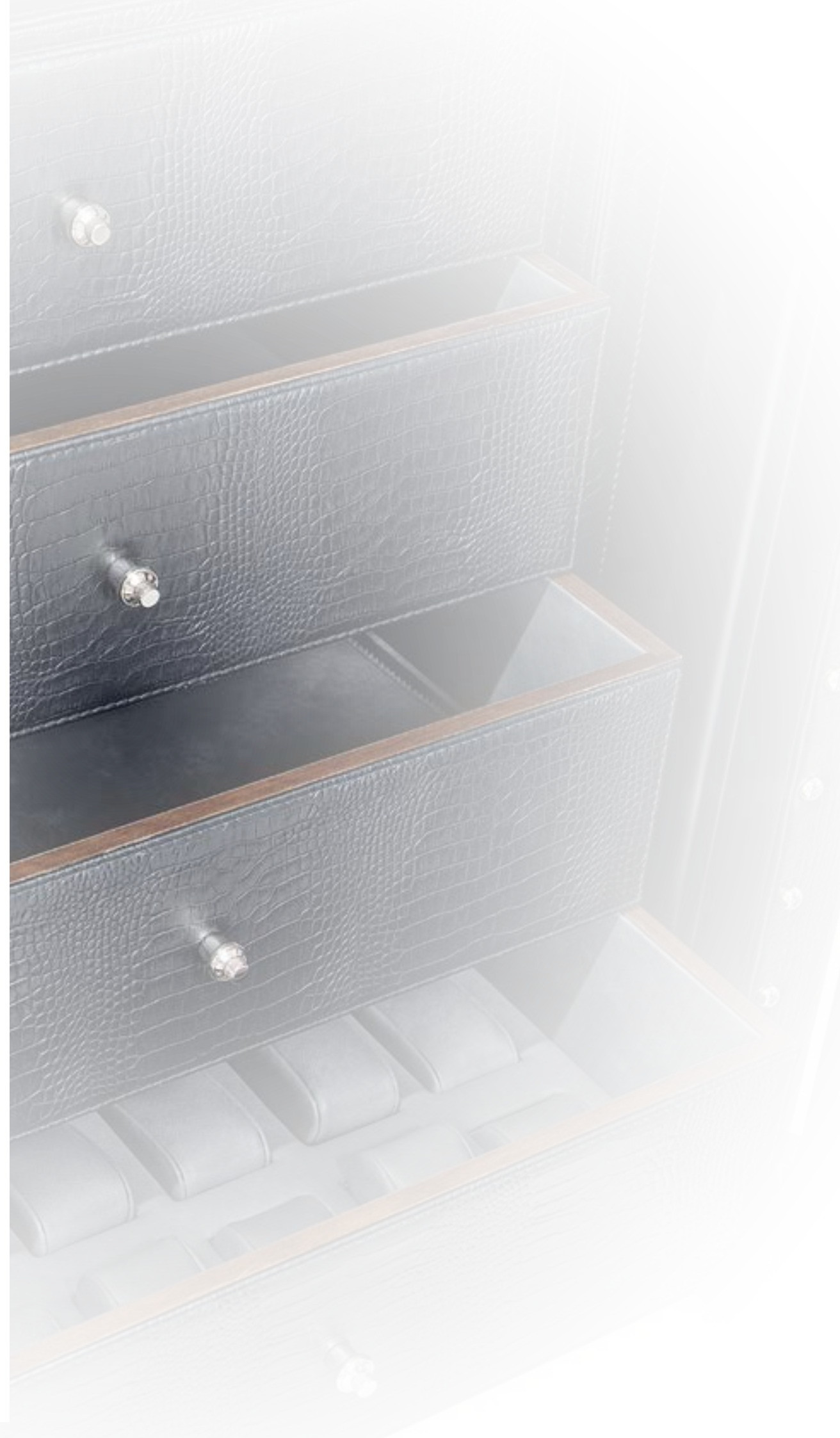






























## AVAILABLE COLOURS



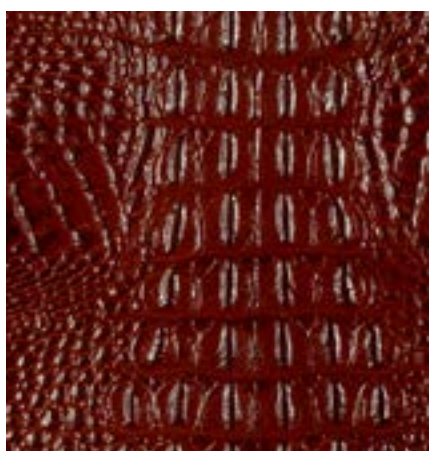
Calf Leather col. Tan



Calf Leather col. Black



Croco Stamped Calf Leather  
col. Black



Croco Stamped Calf Leather  
col. Brown



Carbon Fiber



Macassar Zebra Wood

## ACCESSORIES

Power Cord Adapters



UN/1200 EU Adapter  
UN/1201 US Adapter  
UN/1202 JP Adapter

Watch Supports



UN/1210 Small Watch Support  
UN/1212 Standard/Large Watch Support

Glass Frame for Singles



UN/12800 Traditional Closed Frame



### THE UNDERWOOD WINDING MODULE

- Operates on either AC or battery power
- When using battery power, batteries will last 12 months
- When using AC power, it is suggested to remove out all batteries from any device.
- Continuously flashing green LED lets you know the system is operational, even during rest cycles
- When low-battery red LED lights, 1 month to replace batteries.

### EASY TO USE AND EFFICIENT

The most important and obvious function of the Underwood watch winder is of course that of winding your watches, and the associated number of rotations per day. To keep things simple the Underwood winder has an ex-factory setting that is automatic, simple and effective with no additional adjustments needed. Just place your watch on the spring-loaded support mechanism, insert the support into the module and turn on the unit. The unit will rotate 10 minutes clockwise, then 10 minutes counter-clockwise, after which it stops for 5 hours and 40 minutes. It will then repeat this cycle.

### ALTERNATIVELY

Underwood has developed a new system, which allows the possibility of directly programming your watch winder according to the specifications of the watch manufacturer, by a customized USB cable, downloading the Programming System.



Available drivers for free from Underwood official web site.

All cabinets come with the USB customized cable included for free.



# THE COLLECTION

Modules collection opereting on either AC or battery power



Single Watch Winder with Closed Frame

Art.Code: UN/800

Dimensions: ca. W9,2 x H11 x D11,5 cm  
Approx. W3.62 x H4.33 x D4.52 inches



Single Watch Winder with Open Frame

Art.Code: UN/9000

Dimensions: ca. W9,2 x H11 x D12,5 cm  
Approx. W3.62 x H4.33 x D4.92 inches



Single Watch Winder with Open Frame Covered with Leather Panels

Art. Code: UN/9005 Calf Leather  
Available in two colours, Black and Tan.

Art. Code: UN/9005/C Croco Stamped Calf Leather  
Available in two colours, Black and Brown.

Art. Code: UN/5005 Carbon Fiber

Dimensions: ca. W12 x H13 x D13 cm  
Approx. W4 x H4.33 x D4.92 inches



Single Watch Winder with Leather Travel Case

Art. Code: UN/810 Calf Leather  
Available in two colours, Black and Tan.

Art. Code: UN/810/C Croco Stamped Calf Leather  
Available in two colours, Black and Brown.

Art. Code: UN/5810 Carbon Fiber

Dimensions: ca. W12 x H13 x D13 cm  
Approx. W4 x H4.33 x D4.92 inches



Single Watch Winder with Round Window

Art. Code: UN/809 Calf Leather  
Available in two colours, Black and Tan.

Art. Code: UN/809/C Croco Stamped Calf Leather  
Available in two colours, Black and Brown.

Art. Code: UN/5809 Carbon Fiber

Dimensions: ca. W12 x H13 x D13 cm  
Approx. W4 x H4.33 x D4.92 inches



The Double - Module Unit EvO

Art. Code: UN/9001 Calf Leather  
Available in two colours, Black and Tan.

Art. Code: UN/9001/C Croco Stamped Calf Leather  
Available in two colours, Black and Brown.

Art. Code: UN/5001 Carbon Fiber

Dimensions: ca. W22 x H15 x D15 cm  
Approx. W8.66 x H5.70 x D6 inches



The Three - Module Unit EvO

Art. Code: UN/9007 Calf Leather  
Available in two colours, Black and Tan.

Art. Code: UN/9007/C Croco Stamped Calf Leather  
Available in two colours, Black and Brown.

Art. Code: UN/5007 Carbon Fiber

Dimensions: ca. W33 x H15 x D15 cm  
Approx. W13 x H6.10 x D6 inches



The Four - Module Unit EvO

Art. Code: UN/9002 Calf Leather  
Available in two colours, Black and Tan.

Art. Code: UN/9002/C Croco Stamped Calf Leather  
Available in two colours, Black and Brown.

Art. Code: UN/5002 Carbon Fiber

Dimensions: ca. W23 x H27,5 x D15 cm  
Approx. W9 x H10.5 x D6 inches





The Six-Module Unit EvO

Art. Code: UN/9004 Calf Leather  
Available in two colours, Black and Tan.

Art. Code: UN/9004/C Croco Stamped Calf Leather  
Available in two colours, Black and Brown.

Art. Code: UN/5004 Carbon Fiber

Dimensions: ca. W42 x H27 x D14 cm  
Approx. W16.53 x H10.62 x D5.51 inches



The Three-Module Unit with Watch Case

Art. Code: UN/870 W Calf Leather  
Available in two colours, Black and Tan.

Art. Code: UN/870/C W Croco Stamped Calf Leather  
Available in two colours, Black and Brown.

Dimensions: ca. W32 x H25 x D15,5 cm  
Approx. W12.59 x H9.84 x D6.10 inches



The Twin-Module Unit

Art. Code: UN/815 W Calf Leather  
Available in two colours, Black and Tan.

Art. Code: UN/815/C W Croco Stamped Calf Leather  
Available in two colours, Black and Brown.

Dimensions: ca. W22 x H16,5 x D15,5 cm  
Approx. W8.66 x H6.49 x D6.10 inches



The Four-Module with compartment trays

Art. Code: UN/842 W Calf Leather  
Available in two colours, Black and Tan.

Art. Code: UN/842/C W Croco Stamped Calf Leather  
Available in two colours, Black and Brown.

Dimensions: ca. W32 x H28,8 x D15,5 cm  
Approx. W12.59 x H11.33 x D6.10 inches



The Twin-Module with compartment trays

Art. Code: UN/840 W Calf Leather  
Available in two colours, Black and Tan.

Art. Code: UN/840/C W Croco Stamped Calf Leather  
Available in two colours, Black and Brown.

Dimensions: ca. W32 x H17 x D15,5 cm  
Approx. W12.59 x H6.69 x D6.10 inches



The Four-Module Unit with Watch Storage Trays

Art. Code: UN/871 W Calf Leather  
Available in two colours, Black and Tan.

Art. Code: UN/871/C W Croco Stamped Calf Leather  
Available in two colours, Black and Brown.

Dimensions: ca. W42 x H29 x D16 cm  
Approx. W16.53 x H11.41 x D6.29 inches



The Three-Module Unit

Art. Code: UN/812 W Calf Leather  
Available in two colours, Black and Tan.

Art. Code: UN/812/C W Croco Stamped Calf Leather  
Available in two colours, Black and Brown.

Dimensions: ca. W32 x H17 x D15,5 cm  
Approx. W12.59 x H6.69 x D6.10 inches



The Six-Module Unit

Art. Code: UN/814 W Calf Leather  
Available in two colours, Black and Tan.

Art. Code: UN/814/C W Croco Stamped Calf Leather  
Available in two colours, Black and Brown.

Dimensions: ca. W32 x H28,5 x D15,5 cm  
Approx. W12.59 x H11.22 x D6.10 inches





#### The Eight-Module Unit

Art. Code: UN/816 W Calf Leather  
Available in two colours, Black and Tan.

Art. Code: UN/816/C W Croco Stamped Calf Leather  
Available in two colours, Black and Brown.

Dimensions: ca. W42 x H28,8 x D15,5 cm  
Approx. W16.53 x H11.33 x D6.10 inches.



#### The Twelve-Module Unit

Art. Code: UN/818 W Calf Leather  
Available in two colours, Black and Tan.

Art. Code: UN/818/C W Croco Stamped Calf Leather  
Available in two colours, Black and Brown.

Dimensions: ca. W42 x H40,8 x D15,5 cm  
Approx. W16.53 x H16.06 x D6.10 inches



#### The Twenty-Module Unit

Art. Code: UN/844 W Calf Leather  
Available in two colours, Black and Tan.

Art. Code: UN/844/C W Croco Stamped Calf Leather  
Available in two colours, Black and Brown.

Dimensions: ca. W63,5 x H58 x D19,5 cm  
Approx. W25 x H22.83 x D7.67 inches.



#### The Double-Module Unit EvO

In Macassar Wood

Art. Code: UN/79001

Dimensions: ca. W22 x H15 x D15 cm  
Approx. W8.66 x H5.70 x D6 inches.



#### The Three-Module Unit EvO

In Macassar Wood

Art. Code: UN/79007

Dimensions: ca. W33 x H15 x D15 cm  
Approx. W13 x H6.10 x D6 inches.



#### The Four-Module Unit EvO

In Macassar Wood

Art. Code: UN/79002

Dimensions: ca. W23 x H27,5 x D15 cm  
Approx. W9 x H10.5 x D6 inches.



#### The Three-Module with Jewellery Case

In Macassar Wood

Art. Code: UN/7824 W

Dimensions: ca. W32 x H25 x D15,5 cm  
Approx. W12.59 x H9.84 x D6.10 inches.



#### The Six-Module Unit

In Macassar Wood

Art. Code: UN/7823 W

Dimensions: ca. W32 x H28,5 x D15,5 cm  
Approx. W12.59 x H11.22 x D6.10 inches.





The Eight-Module Unit

In Macassar Wood

Art. Code: UN/7826 W

Dimensions: ca. W42 x H28,8 x D15,5 cm  
Approx. W16.53 x H11.33 x D6.10 inches.



The Twelve-Module Unit

In Macassar Wood

Art. Code: UN/7827 W

Dimensions: ca. W42 x H40,8 x D15,5 cm  
Approx. W16.53 x H16.03 x D6.10 inches.

Watch & Jewellery Cases

Watch Storage Box for a Single Watch.

Art. Code: UN/214 Calf Leather  
Available in two colours, Black and Tan.

Art. Code: UN/214/C Croco Stamped Calf Leather  
Available in two colours, Black and Brown.

Art. Code UN/5214 Carbon Fiber

Dimensions: ca. W13 x H8 x D10 cm  
Approx. W5 x H3.15 x D3.93 inches.

Watch Storage Box for two watches

Art. Code: UN/215 Calf Leather  
Available in two colours, Black and Tan.

Art. Code: UN/215/C Croco Stamped Calf Leather  
Available in two colours, Black and Brown.

Art. Code UN/5215 Carbon Fiber

Dimensions: ca. W17 x H8 x D12,5 cm  
Approx. W6.69 x H3.15 x D4.92 inches.



Watch Storage Box for 3 Watches

Art. Code: UN/209 Calf Leather  
Available in two colours, Black and Tan.

Art. Code: UN/209/C Croco Stamped Calf Leather  
Available in two colours, Black and Brown.

Art. Code UN/5209 Carbon Fiber

Dimensions: ca. W20 x H9 x D13,5 cm  
Approx. W7.84 x H3.54 x D5.31 inches.

Watch Storage Box for 4 Watches

Art. Code: UN/234 Calf Leather  
Available in two colours, Black and Tan.

Art. Code: UN/234/C Croco Stamped Calf Leather  
Available in two colours, Black and Brown.

Art. Code UN/5234 Carbon Fiber

Dimensions: ca. W32 x H14 x D8,5 cm  
Approx. W12.59 x H5.52 x D3.34 inches.

Watch Storage Box for 6 Watches

Art. Code: UN/210 Calf Leather  
Available in two colours, Black and Tan.

Art. Code: UN/210/C Croco Stamped Calf Leather  
Available in two colours, Black and Brown.

Art. Code UN/5210 Carbon Fiber

Dimensions: ca. W25 x H9 x D24 cm  
Approx. W9.84 x H3.54 x D9.44 inches.

Watch Storage Box for 8 Watches

Art. Code: UN/218 Calf Leather  
Available in two colours, Black and Tan.

Art. Code: UN/218/C Croco Stamped Calf Leather  
Available in two colours, Black and Brown.

Art. Code UN/5218 Carbon Fiber

Dimensions: ca. W32 x H9 x D24 cm  
Approx. W12 x H3.54 x D9.44 inches.





Watch Storage Box for 10 Watches

Art. Code: UN/211 Calf Leather  
Available in two colours, Black and Tan.

Art. Code: UN/211/C Croco Stamped Calf Leather  
Available in two colours, Black and Brown.

Art. Code UN/5211 Carbon Fiber

Dimensions: ca. W39,5 x H9 x D24 cm  
Approx. W15.55 x H3.54 x D9.44 inches.



Watch Storage Box for 6 Watches with Compartment

Art. Code: UN/232 Calf Leather  
Available in two colours, Black and Tan.

Art. Code: UN/232/C Croco Stamped Calf Leather  
Available in two colours, Black and Brown.

Art. Code UN/5232 Carbon Fiber

Dimensions: ca. W32 x H9 x D24 cm  
Approx. W12.6 x H3.54 x D9.44 inches.



Watch Storage Box for 10 Watches with Compartment

Art. Code: UN/233 Calf Leather  
Available in two colours, Black and Tan.

Art. Code: UN/233/C Croco Stamped Calf Leather  
Available in two colours, Black and Brown.

Art. Code UN/5233 Carbon Fiber

Dimensions: ca. W46 x H10 x D24 cm  
Approx. W18.11 x H4 x D9.44 inches.



Attaché Case for 10 Large Watches

Art. Code: UN/120 Calf Leather  
Available in two colours, Black and Tan.

Art. Code: UN/120/C Croco Stamped Calf Leather  
Available in two colours, Black and Brown.

Art. Code UN/5120 Carbon Fiber

Dimensions: ca. W44,5 x H11 x D34 cm  
Approx. W17.52 x H4.33 x D13.38 inches.



Single Travel Watch Case

Art. Code: UN/230 Calf Leather  
Available in two colours, Black and Tan.

Art. Code: UN/230/C Croco Stamped Calf Leather  
Available in two colours, Black and Brown.

Art. Code UN/5230 Carbon Fiber

Dimensions: ca. Ø10,5 x W7 cm  
Approx. Ø4 x W2.75 inches.



Travel Watch Case Double

Art. Code: UN/231 Calf Leather  
Available in two colours, Black and Tan.

Art. Code: UN/231/C Croco Stamped Calf Leather  
Available in two colours, Black and Brown.

Art. Code UN/5231 Carbon Fiber

Dimensions: ca. Ø10,5 x W13,5 cm  
Approx. Ø4 x W5.31 inches.



Watch Small Holder Roll  
For storing Two watches

Art. Code: UN/203 Calf Leather  
Available in two colours, Black and Tan.

Art. Code: UN/203/C Croco Stamped Calf Leather  
Available in two colours, Black and Brown.

Art. Code UN/5203 Carbon Fiber

Dimensions: ca. Ø9 x L15 cm  
Approx. Ø3.54 x L6 inches.



Watch Medium Holder Roll  
For storing Three Watches

Art. Code: UN/204 Calf Leather  
Available in two colours, Black and Tan.

Art. Code: UN/204/C Croco Stamped Calf Leather  
Available in two colours, Black and Brown.

Art. Code UN/5204 Carbon Fiber

Dimensions: ca. Ø9 x L20 cm  
Approx. Ø3.54 x L8 inches.





Watch Large Holder Roll  
For storing Five Watches

Art. Code: UN/205 Calf Leather  
Available in two colours, Black and Tan.

Art. Code: UN/205/C Croco Stamped Calf Leather  
Available in two colours, Black and Brown.

Art. Code UN/5205 Carbon Fiber

Dimensions: ca. Ø9 x L27 cm  
Approx. Ø3.54 x L10 inches.



Jewellery Roll

Art. Code: UN/208 Calf Leather  
Available in two colours, Black and Tan.

Art. Code: UN/208/C Croco Stamped Calf Leather  
Available in two colours, Black and Brown.

Art. Code UN/5208 Carbon Fiber

Dimensions: ca. Ø9 x L21 cm  
Approx. Ø3.54 x L8.26 inches.



Watch and Jewellery Box Small

Art. Code: UN/216 Calf Leather  
Available in two colours, Black and Tan.

Art. Code: UN/216/C Croco Stamped Calf Leather  
Available in two colours, Black and Brown.

Art. Code UN/5216 Carbon Fiber

Dimensions: ca. W18 x H6 x D13 cm  
Approx. W7 x H2.36 x D5.11 inches.



Watch and Jewellery Box Large

Art. Code: UN/217 Calf Leather  
Available in two colours, Black and Tan.

Art. Code: UN/217/C Croco Stamped Calf Leather  
Available in two colours, Black and Brown.

Art. Code UN/5217 Carbon Fiber

Dimensions: ca. W28 x H6 x D22 cm  
Approx. W11 x H2.36 x D8.66 inches.



Cufflinks Box  
Holding up to 6 pairs of cufflinks.

Art. Code: UN/220 Calf Leather  
Available in two colours, Black and Tan.

Art. Code: UN/220/C Croco Stamped Calf Leather  
Available in two colours, Black and Brown.

Art. Code UN/5220 Carbon Fiber

Dimensions: ca. W12 x H4 x D8,5 cm  
Approx. W4.72 x H4.72 x D3.34 inches.



Cufflinks Box  
Holding up to 24 pairs of cufflinks.

Art. Code: UN/221 Calf Leather  
Available in two colours, Black and Tan.

Art. Code: UN/221/C Croco Stamped Calf Leather  
Available in two colours, Black and Brown.

Art. Code UN/5221 Carbon Fiber

Dimensions: ca. W23 x H4 x D16 cm  
Approx. W9 x H1.57 x D6.29 inches.



Cufflinks Box  
Holding up to 48 pairs of cufflinks.

Art. Code: UN/224 Calf Leather  
Available in two colours, Black and Tan.

Art. Code: UN/224/C Croco Stamped Calf Leather  
Available in two colours, Black and Brown.

Art. Code UN/5224 Carbon Fiber

Dimensions: ca. W24,5 x H7 x D17 cm  
Approx. W9.64 x H3 x D6.69 inches.



Watch Accessory Set  
Containing a variety of useful BERGEON watch tools, for strap changing and cleaning your watches.

Art. Code: UN/228 Calf Leather  
Available in two colours, Black and Tan.

Art. Code: UN/228/C Croco Stamped Calf Leather  
Available in two colours, Black and Brown.

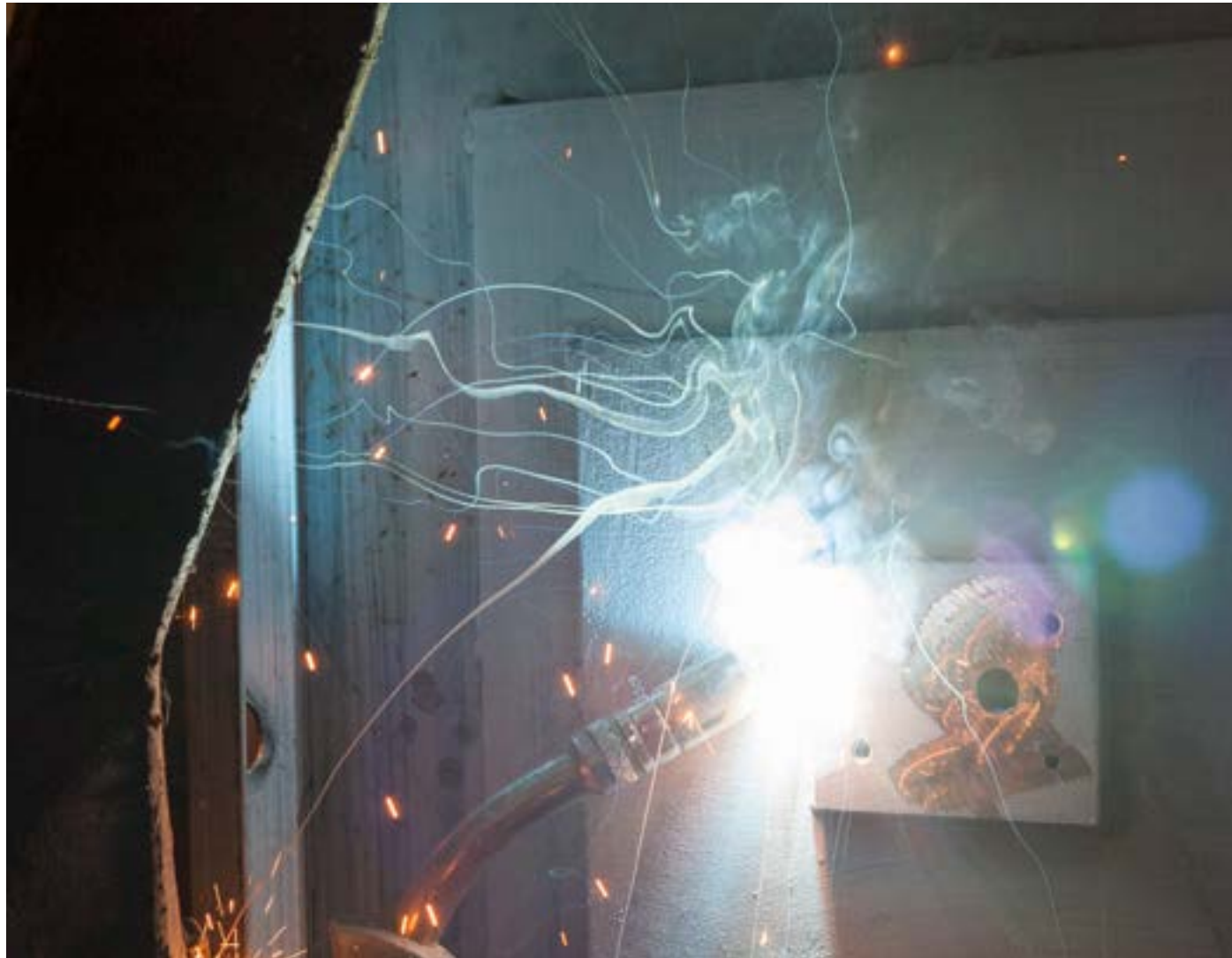
Art. Code UN/5228 Carbon Fiber

Dimensions: ca. W19 x H4 x D19,5 cm  
Approx. W7.48 x H1.57 x D7.67 inches.



## UNDERWOOD SAFES

The Underwood Safes use 50mm (ca. 2 inches) armour steel plate for all of the sides, whereas the doors use 70mm (2.75 inches) of the same steel. Welded across the inside of both walls there are also a series of steel rods, welded in parallel on the inside. This is so that if the walls are cut from the outside, then the cut section cannot be removed without actually cutting through the rods as well. There are also a series of shorter rods welded inside attaching the outside and internal steel walls to each other. The space between the walls is filled with cement, this adds weight to the safe and solidifies the whole construction. The safe is also fire resistant, as well. The safe is locked by way of triple expansion bar rods, using a key system Double Mapp A8.



Following in the long tradition of Underwood and exclusive leather goods, the safe and the cabinets can even be covered in exclusive leather in a colour and style selected by the client. The internal configuration and external finishing of any safe can be modified according to the clients specifications. That to say any safe can be completely customized and projected in any detail, under customer needs and requests.

## Underwood Safe Covered in Leather with 25 Winders and 6 Drawers

Art.Code. UN/855/L



Weights approx.. 330.00 Kgs. (727lbs)

Safe Closed: ca. H120 x W85 x D55 cm

Safe Closed: ca. H47.5 x W33.5 x D21.7 inches

Safe Open: ca. H190 x W85 x D55 cm

Safe Open: ca. H74 x W33.5 x D21.7 inches

Powered externally by way of a single transformer. The winders cabinet comes up by two electrical linear pistons. The winders come up by a remote controller. The internal configuration and external finishing can be modified according to the clients specifications.



## Underwood Safe in Briarwood 50 Winders and 6 Drawers

Art.Code. UN/856/BR



Weights approx.. 330.00 Kgs. (727lbs)

Safe Closed: ca. H120 x W85 x D75 cm

Safe Closed: ca. H 47.5 x W33.5 x D29.52 inches

Safe Open: ca. H190 x W85 x D75 cm

Safe Open: ca. H 74 x W33.5 x D29.52 inches

Powered externally by way of a single transformer. The winders cabinet comes up by four electrical linear pistons. The winders come up by a remote controller. The internal configuration and external finishing can be modified according to the clients specifications.

## Underwood Safe Covered in Leather 48 Winders with Drawers

Art.Code. UN/856/L



Weights approx.. 330.00 Kgs. (727lbs)

Safe Closed: ca. H121 x W88 x D70 cm

Safe Closed: ca. H48 x W35 x D28 inches

Safe Open: ca. H171 x W88 x D70 cm.

Safe Open: ca. H67 x W35 x D28 inches

Powered externally by way of a single transformer. The winders cabinet comes up by four electrical linear pistons. The winders come up by a remote controller. The internal configuration and external finishing can be modified according to the clients specifications.



## Underwood Safe 16 Winders Covered in Leather with Drawers

Art.Code. UN/851/L



Weight: ca. 350kgs. (770lbs)

External Dimensions: ca. H100 x W60 x D60 cm  
(H39.4 x W24 x D24 inches)

Internal Dimensions: ca. H90 x W50 x D42 cm  
(H35.5 x W19.7 x D16.5 inches)



This unit is fitted with 16 Underwood Watch Winding Modules, powered externally by way of a single transformer. Three additional spacious drawers provide ample storage space for additional watches and jewellery items. The internal configuration and external finishing can be modified according to the clients specifications.

## Underwood Safe 16 Winders Covered in Leather with Drawers

Art.Code. UN/851/L



Weight: ca. 350kgs. (770lbs)

External Dimensions: ca. H100 x W60 x D60 cm  
(H39.4 x W24 x D24 inches)

Internal Dimensions: ca. H90 x W50 x D42 cm  
(H35.5 x W19.7 x D16.5 inches)



This unit is fitted with 16 Underwood Watch Winding Modules, powered externally by way of a single transformer. Three additional spacious drawers provide ample storage space for additional watches and jewellery items. The internal configuration and external finishing can be modified according to the clients specifications.



## Underwood Safe 16 Winders Varnished with Drawers

Art.Code. UN/851



Weight: ca. 350kgs. (770lbs)

External Dimensions: ca. H100 x W60 x D60 cm  
(H39.4 x W24 x D24 inches)

Internal Dimensions: ca. H90 x W50 x D42 cm  
(H35.5 x W19.7 x D16.5 inches)



This unit is fitted with 16 Underwood Watch Winding Modules, powered externally by way of a single transformer. Three additional spacious drawers provide ample storage space for additional watches and jewellery items. The internal configuration and external finishing can be modified according to the clients specifications.

## Underwood Armour Plated Cabinet 30 Winders with Drawers

Art.Code. UN/854/L



Weight: ca. 250 kgs. (551lbs)

External Dimensions: ca. H170 x W70 x D60 cm  
(H63 x W27 x D24 inches)

Internal Dimensions: ca. H152 x W68 x D42 cm  
(H59.84 x W26.77 x D16.5 inches)



The Underwood Armour Plated Cabinet Fitted with 30 Underwood Watch Winding Modules, and 4 spacious drawers for non-automatic watches and jewellery items, covered in leather. The internal configuration and external finishing can be modified according to the clients specifications.



## Underwood Safe 25 Winders Covered in Leather with Drawers

Art.Code. UN/859/L



Weight: ca. 730kgs. (1,610lbs)

External Dimensions: ca. H170 x W70 x D60 cm  
(H67 x W27 x D24 inches)

Internal Dimensions: ca. H164 x W60 x D42 cm  
(H64.5 x W24 x D16.5 inches)



Fitted with 25 Underwood Watch Winding Modules, and 4 spacious drawers for non-automatic watches and jewellery items. The internal configuration and external finishing can be modified according to the clients specifications.

## Underwood Safe 40 Winders Covered in Leather with Drawers

Art.Code. UN/852/L



Weight: ca. 730kgs. (1,610lbs)

External Dimensions: ca. H175 x W70 x D60 cm  
(H69 x W27 x D24 inches)

Internal Dimensions: ca. H164 x W60 x D42 cm  
(H64.5 x W24 x D16.5 inches)



Fitted with 40 Underwood Watch Winding Modules, and 4 spacious drawers for non-automatic watches and jewellery items, covered in leather. The internal configuration and external finishing can be modified according to the clients specifications.



## UNDERWOOD BIOMETRIC UNITS

The Underwood fingerprint scanning system is basically a stand-alone system which by scanning and recognizing the fingerprint sends a command signal to activate and open the electromagnetic lock system in the case. The system is simple to use. In the beginning the owner only needs to register their fingerprints following a predetermined set of instructions. Afterwards to open the case all that is required is to place the index finger on the scanner and following verification the command signal to open will be issued. One of the main advantages of the system is the fact that the only way to access the case is by way of the scanner, there is no other way anybody can access the actual locks or command system from the outside, as all of these elements are inside the case. Regarding the matter of privacy and security there may be a fear or concern that the registration of a fingerprint might be a problem, in that someone could possibly access the system and steal the image of the fingerprint, stealing their identity so to speak and possibly using this for illegal purposes.



Nothing could be further from the truth because with this system the fingerprint is not stored as an actual image but is coded and transferred into a mathematical algorithm, whereby only certain points of the fingerprint are registered. These points such as whorls, loops, bifurcations and crests etc. are the characteristic points used to determine any fingerprint. It is impossible to reconstruct the image of a fingerprint from this coded information.

## Biometric Cabinets

Operating on either AC or battery power



The Biometric Twelve-Module Unit

Art. Code: UN/3225 Calf Leather  
Available in two colours, Black and Tan.

Art. Code: UN/3225/C Croco Stamped Calf Leather  
Available in two colours, Black and Brown.

Art. Code UN/53225 Carbon Fiber

Dimensions: ca. W85,5 x H48 x D28,5 cm  
Approx. W33.66 x H18.89 x D11.22 inches.



The internal configuration and external finishing can be modified according to the clients specifications.





### The Biometric Twenty-Module Unit

Art. Code: UN/3226 Calf Leather  
Available in two colours, Black and Tan.

Art. Code: UN/3226/C Croco Stamped Calf Leather  
Available in two colours, Black and Brown.

Art. Code UN/53226 Carbon Fiber

Dimensions: ca. W85,5 x H72 x D28,5 cm  
Approx. W33.66 x H28.34 x D11.22 inches.



The internal configuration and external finishing can be modified according to the clients specifications.



### The Biometric Forty-Module Unit

Art. Code: UN/3227 Calf Leather  
Available in two colours, Black and Tan.

Art. Code: UN/3227/C Croco Stamped Calf Leather  
Available in two colours, Black and Brown.

Art. Code UN/53227 Carbon Fiber

Dimensions: ca. W85,5 x H132 x D28,5 cm  
Approx. W33.66 x H51.96 x D11.22 inches.



The internal configuration and external finishing can be modified according to the clients specifications.





### The Biometric Sixty -Module Unit

Art. Code: UN/3228 Calf Leather  
Available in two colours, Black and Tan.

Art. Code: UN/3228/C Croco Stamped Calf Leather  
Available in two colours, Black and Brown.

Art. Code UN/53228 Carbon Fiber

Dimensions: ca. W92 x H191,5 x D28,5 cm  
Approx. W36.22 x H75.19 x D11.22 inches.

The internal configuration and external finishing can be modified according to the clients specifications.



### The Biometric Thirty-Module Unit

Art. Code: UN/3222 Calf Leather  
Available in two colours, Black and Tan.

Art. Code: UN/3222/C Croco Stamped Calf Leather  
Available in two colours, Black and Brown.

Art. Code UN/53222 Carbon Fiber

Dimensions: ca. W62 x H152 x D23 cm  
Approx. W24.40 x H59.84 x D9 inches.

The internal configuration and external finishing can be modified according to the clients specifications.







The Biometric Twelve-Module Unit with safe locked by the biometric lock system

Art. Code: UN/3000

Dimensions: ca. W88 x H173 x D28 cm  
Approx. W34.64 x H68.11 x D11 inches.



The internal configuration and external finishing can be modified according to the clients specifications.



The Biometric Forty Module Unit with Safe with additional five drawers for storing watches and jewellery

Art. Code: UN/3231 Calf Leather  
Available in two colours, Black and Tan.

Art. Code: UN/3231/C Croco Stamped Calf Leather  
Available in two colours, Black and Brown.

Art. Code UN/53231 Carbon Fiber

Dimensions: ca. W62,5 x H132 x D26 cm  
Approx. W24.60 x H52 x D10.23 inches.



The internal configuration and external finishing can be modified according to the clients specifications.



### The Biometric Watch and Cufflinks Case

Art. Code: UN/3223 Calf Leather  
Available in two colours, Black and Tan.

Art. Code: UN/3223/C Croco Stamped Calf Leather  
Available in two colours, Black and Brown.

Art. Code UN/53223 Carbon Fiber

Dimensions: ca. W34,5 x H22 x D44 cm  
Approx. W13.5 x H9 x D17.5 inches.



The internal configuration and external finishing can be modified according to the clients specifications.

### The Biometric Watch and Jewellery Case

Art. Code: UN/3224 Calf Leather  
Available in two colours, Black and Tan.

Art. Code: UN/3224/C Croco Stamped Calf Leather  
Available in two colours, Black and Brown.

Art. Code UN/53224 Carbon Fiber

Dimensions: ca. W44 x H22 x D34,5 cm  
Approx. W17.5 x H9 x D13.5 inches.



The internal configuration and external finishing can be modified according to the clients specifications.



# **underwood<sup>®</sup> (London)**

Head Office Florence

Bagno a Ripoli – Firenze - Italy

Tel. +39 055 696456 Fax.: +39 055 696459

[www.underwood-london.com](http://www.underwood-london.com)

[info@underwoodlondonltd.com](mailto:info@underwoodlondonltd.com)

© 2016 underwood (Italia) srl